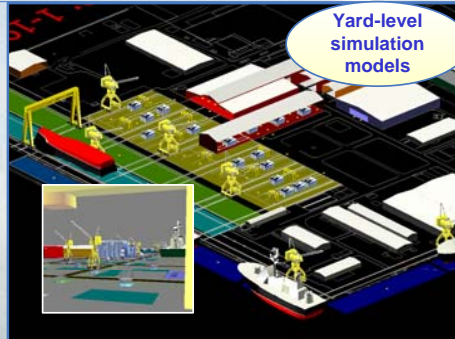
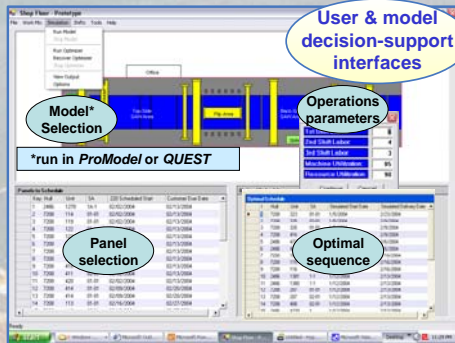
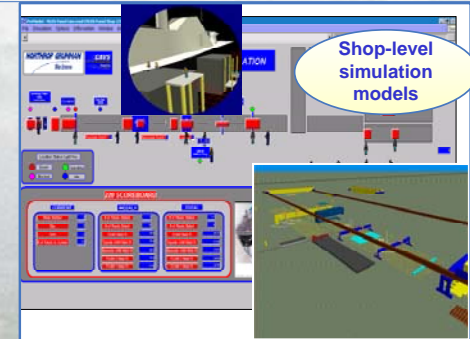


Decision Support System for Shipyard Sequencing and Planning



Acknowledgements



Reduce ship construction lead-time

through

- improved planning, scheduling, sequencing, and resource allocation
- better estimates and management of capacity
- production plans based on "pull" signal from erection

and attained by

- adopting a holistic or systems view - multiple yards and programs considered concurrently
- putting engineering tools in the hands of decision makers
- providing a virtual laboratory to experiment with production alternatives prior to implementation
- employing simulation models to capture salient shipyard behavior
- employing optimization models to identify means to improve performance
- utilize detailed shop models and high-level yard or sector-wide models
- effectively integrating disparate model types

